

# KO-Validated PDP1 Mouse Oligoclonal Antibody



**Catalog #: 71167**

## Aliases

PDP1; Pyruvate Dehydrogenase Phosphatase Catalytic Subunit 1; PDP; PPM2A; PPM2C; PDH; [Pyruvate Dehydrogenase [Acetyl-Transferring]]-Phosphatase 1, Mitochondrial; Protein Phosphatase 2C, Magnesium-Dependent, Catalytic Subunit; Protein Phosphatase, Mg<sup>2+</sup>/Mn<sup>2+</sup> Dependent 2A; EC 3.1.3.43; PDPC 1; Pyruvate Dehydrogenase (Lipoamide) Phosphatase-Phosphatase; Pyruvate Dehydrogenase Phosphatase Catalytic Subunit 1; Protein Phosphatase 2C; EC 3.1.3; PDP 1; PDPC

## Background

Gene Name: PDP1

NCBI Gene Entry: 54704

UniProt Entry: Q9P0J1

## Application Information

Molecular Weight: Predicted, 61 kDa; observed, 53-60 kDa

Clonality: Mouse oligoclonal antibody

Species Reactivity: Human, mouse, rat

Applications Tested: Western blotting (WB), flow cytometry (FCM), immunocytochemistry (ICC)

## Immunogen

Recombinant protein of human PDP1

## Isotype

Mouse IgG

## Storage Buffer

Supplied in PBS (pH 7.4) containing 50% glycerol, 0.5% BSA and 0.09% sodium azide

## Storage

Store at -20 °C for one year.

## Recommended Dilutions

Western Blotting (WB): 1:500-1:2,500

Immunocytochemistry (ICC): 1:100-1:1,000

Flow Cytometry (FCM) : 1:2,000

---

### SUPPORT

SUPPORT@GENUINBIOTECH.COM  
TEL: +1-540-855-7041

### ORDERS

SALES@GENUINBIOTECH.COM  
FAX: +1-540-855-7041

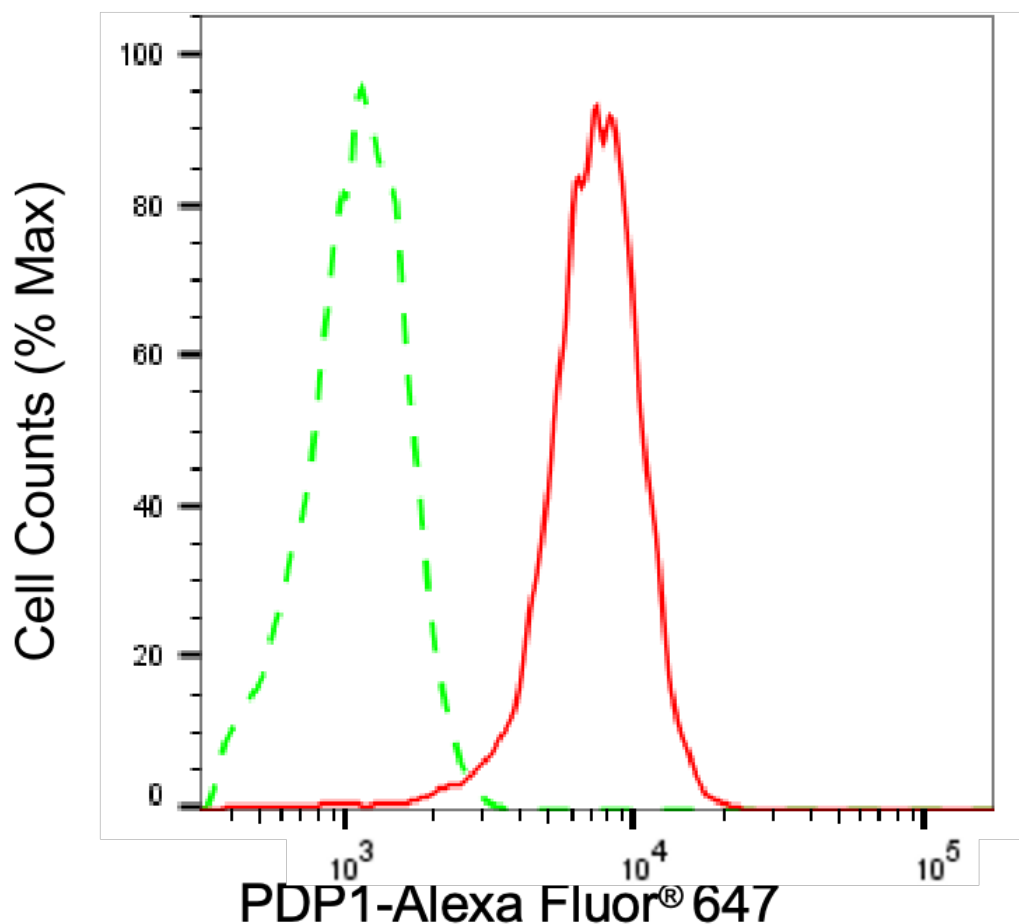
[WWW.GENUINBIOTECH.COM](http://WWW.GENUINBIOTECH.COM)

## KO-Validated PDP1 Mouse Oligoclonal Antibody

PAGE 2

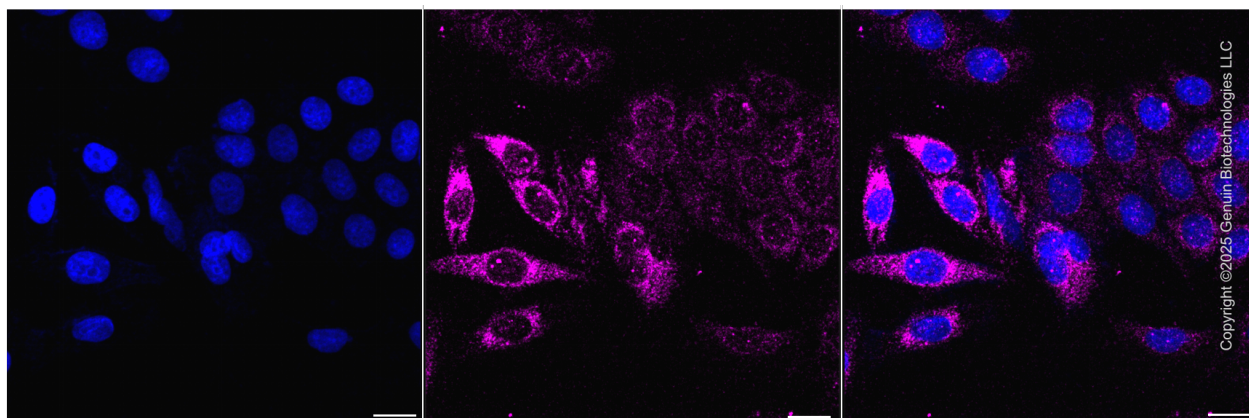
**Note:** This product is for research use only.

### Validation Data



Copyright ©2025 Genuin Biotechnologies LLC

Flow cytometric analysis of PDP1 expression in HepG2 cells using PDP1 antibody (Cat#71167, 1:2,000). Green, isotype control; red, PDP1.



Copyright ©2025 Genuin Biotechnologies LLC

Immunocytochemical staining of HepG2 cells with PDP1 antibody (Cat#71167, 1:1,000) . Nuclei

#### SUPPORT

SUPPORT@GENUINBIOTECH.COM  
TEL: +1-540-855-7041

#### ORDERS

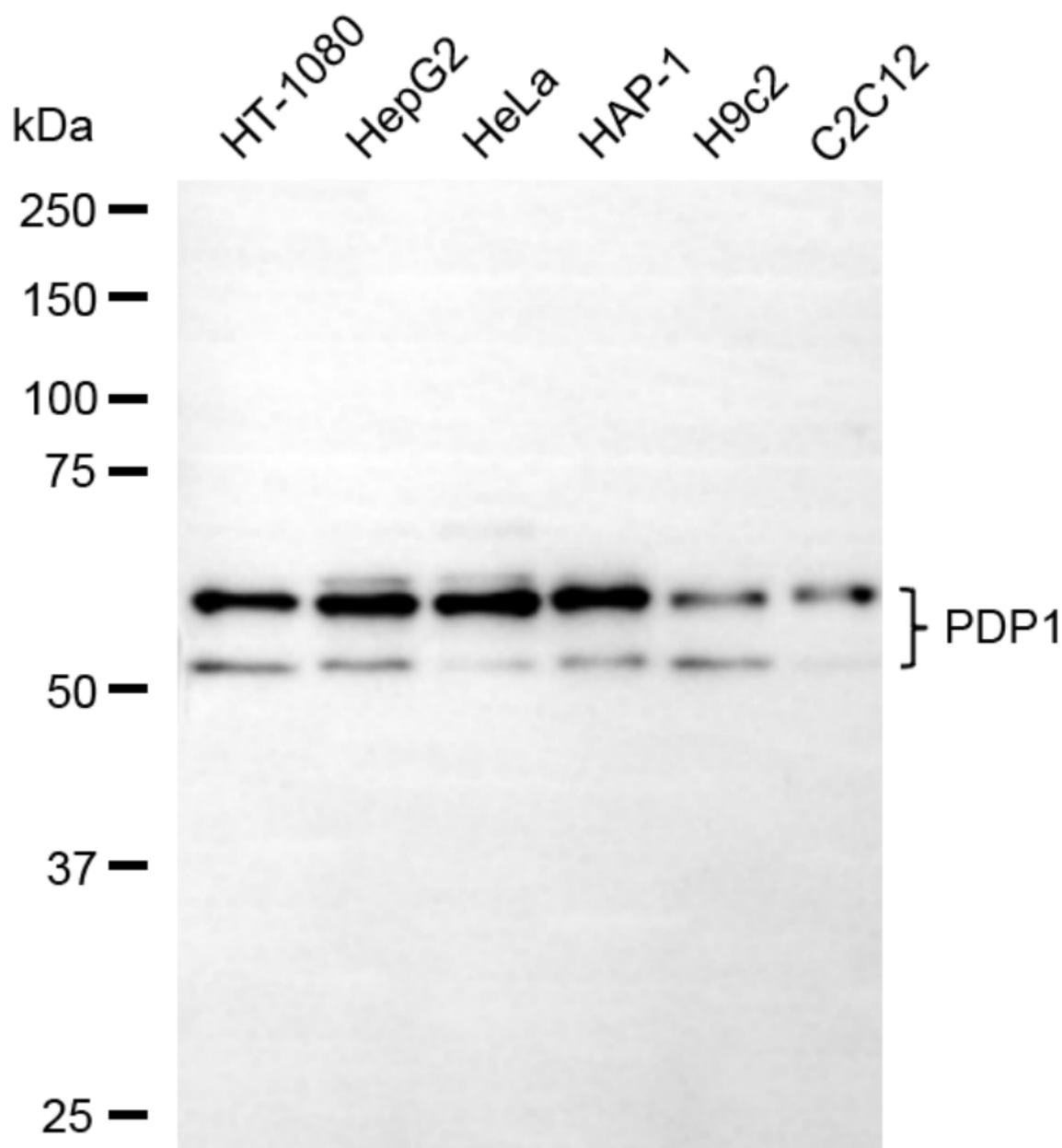
SALES@GENUINBIOTECH.COM  
FAX: +1-540-855-7041

[WWW.GENUINBIOTECH.COM](http://WWW.GENUINBIOTECH.COM)

## KO-Validated PDP1 Mouse Oligoclonal Antibody

PAGE 3

were stained blue with DAPI; PDP1 was stained magenta with Alexa Fluor® 647. Images were taken using Leica stellaris 5. Protein abundance based on laser Intensity and smart gain: Low. Scale bar, 20 µm.



Copyright ©2025 Genuin Biotechnologies LLC

Western blotting analysis using PDP1 antibody (Cat#71167). Total cell lysates (30 µg) from various cell lines were loaded and separated by SDS-PAGE. The blot was incubated with PDP1 antibody (Cat#71167, 1:2,500) and HRP-conjugated goat anti-mouse secondary antibody (Cat#101, 1:20,000) respectively. Image was developed using FeQ™ ECL Substrate Kit (Cat#226).

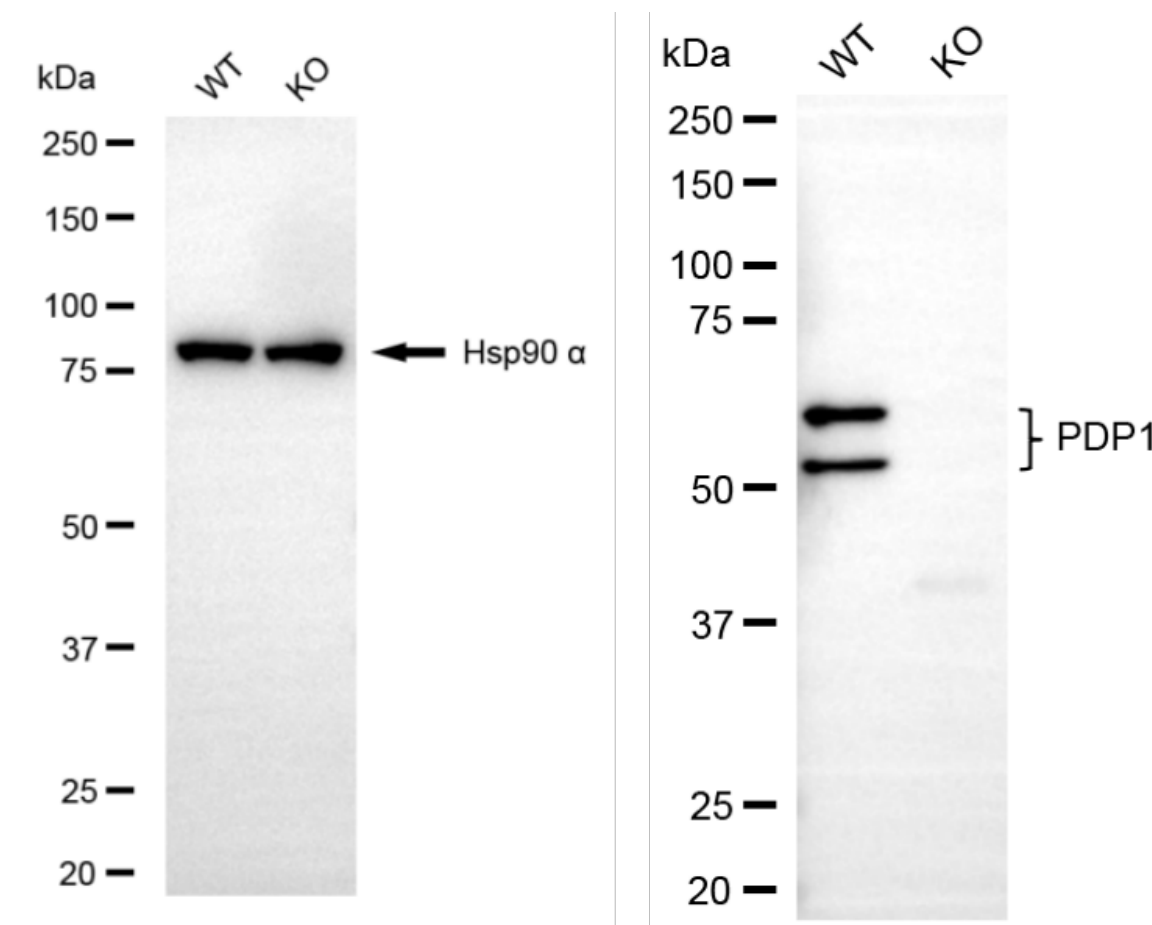
### SUPPORT

SUPPORT@GENUINBIOTECH.COM  
TEL: +1-540-855-7041

### ORDERS

SALES@GENUINBIOTECH.COM  
FAX: +1-540-855-7041

[WWW.GENUINBIOTECH.COM](http://WWW.GENUINBIOTECH.COM)



Copyright ©2025 Genuin Biotechnologies LLC

Western blotting analysis using PDP1 antibody (Cat#71167). PDP1 expression in wild type (WT) and PDP1 knockout (KO) HT-1080 cells with 20 µg of total cell lysates. Hsp90 α serves as a loading control. The blot was incubated with PDP1 antibody (Cat#71167, 1:2,500) and HRP-conjugated goat anti-mouse secondary antibody (Cat#101, 1:20,000) respectively. Image was developed using FeQ™ ECL Substrate Kit (Cat#226).